



Control

Remote control of operating room devices and equipment



Intuitive workspace configuration

The MVS Control operating room equipment management system allows you to work with various types of devices, and intuitive control makes it easier to organize the work of the operating team





Everything is functional, logical, thought out. Functionality that is 100% usable. Ergonomics are amazing too. I think this should be promoted as a standard for the entire country. I'm absolutely delighted!



Eduard Abdulkhaevich Gallyamov

Honored Doctor of the Russian Federation, Doctor of Medical Sciences, Professor

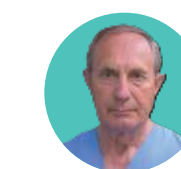
We spent a very long time choosing a solution for integrating operating rooms in our clinic and eventually settled on products from a domestic manufacturer - the MVS company - and have never regretted it!



Sergey Valerievich Popov

Chief physician of the Clinical Hospital named after. Saint Luke

This is a European-level facility, all our wishes are taken into account. I am delighted with the high quality of the work performed. It will be convenient for everyone to work here: medical staff, surgeons, support services, engineers, medical technicians.



Nikolay Semyonovich Grekhovodov

Head of Operations Service of the Federal Center for Cardiovascular Surgery, Khabarovsk

OPERATING TABLES



DOORS



ENDOSCOPIC EQUIPMENT

Aspirator-irrigator

Irrigation, %	Aspiration, %	AUTO
Measurement	Aspiration	
50	40	
Installation	Installation	RESET
50	70	

VENTILATION

Temperature	Humidity
24.8	12%
17.0	16
+ -	+ -

CEILING LIGHTING

BLINDS

▼ || ▲

ACCIDENT NOTIFICATION

ENERGY SAVING



SURGICAL LIGHTS

Infoboard

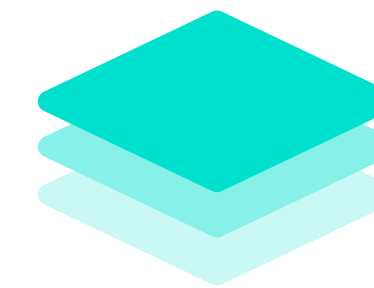
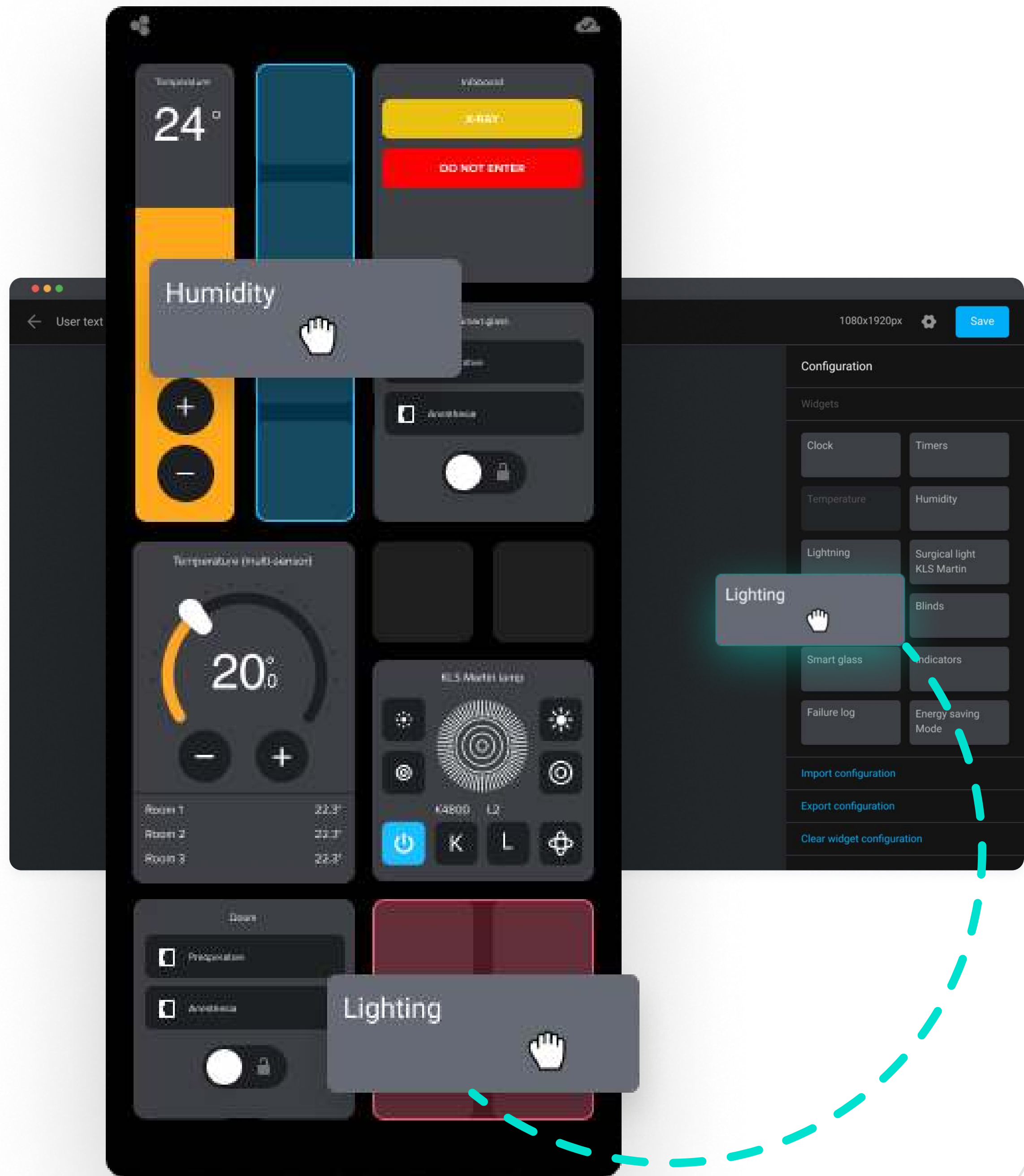
X-RAY

DO NOT ENTER

LASER

SIGNAL BOARDS

SMART GLASS



Flexible widget system

The configuration service allows you to
customize control panels for different scenarios



One-touch control

Quick configuration of the operating room workspace, thanks to the use of presets

Preset 1

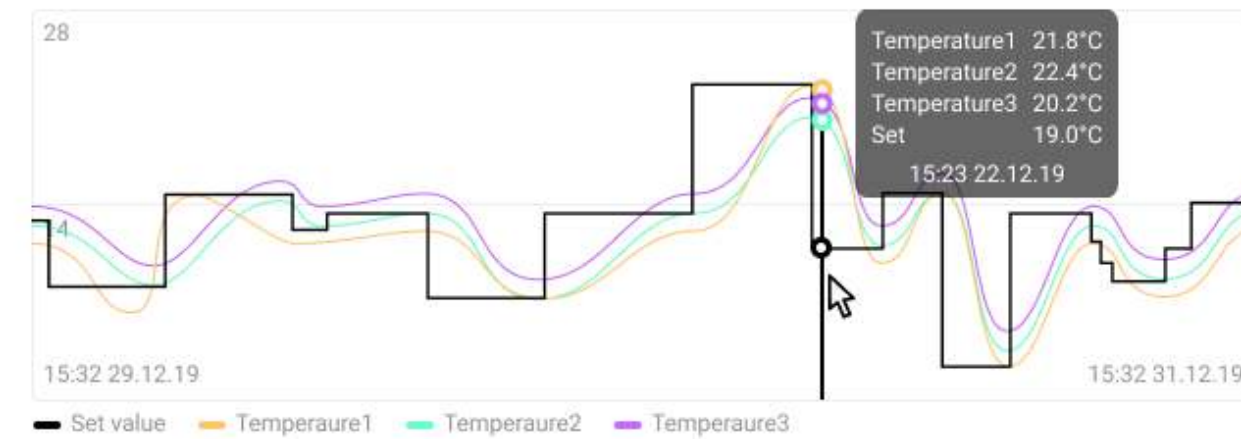
Lighting	
Room 1 Group 1	<input checked="" type="checkbox"/> On
Room 1 Group 2	<input type="checkbox"/> Off
Brightness	0
Color	<input checked="" type="checkbox"/> rgb(255,133,133)
Indicators	
DO NOT ENTER	<input type="checkbox"/> Off
LASER	<input checked="" type="checkbox"/> On

[Cancel](#) [Save as Preset 1](#)

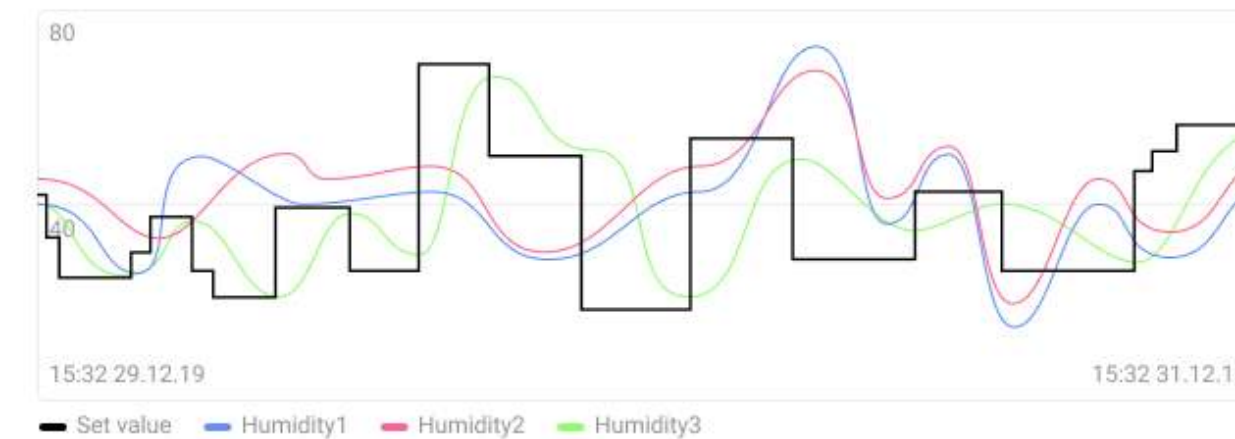
⚠ 5 failures

Dashboard

Temperature ↻



Humidity ↻



Events log ↻

📅 All time ⌵ 🏷 All types ⌵

Event	Type	Time	Date
Door 1 closed	Doors	10:23	10.12.2019
Door 1 is open	Doors	11:04	10.12.2019
Lighting group 1 on	Lighting	21:04	09.12.2019
Temperature set to 26.1°C	Temperature	23:24	07.12.2019
Power saving mode enabled	Energy saving	15:34	05.12.2019
Blinds 1 up	Blinds	17:24	02.12.2019
Close all doors	Doors	18:19	01.12.2019
Medical accident gases oxygen	Failure	04:02	31.11.2019
Light field increased	KLS Martin	06:38	30.11.2019
Insulation breakdown	Failure	23:20	29.11.2019
Overheating MT1	Failure	07:23	28.11.2019
Overload MT1	Failure	10:23	27.11.2019
Humidity set to 25%	Humidity	11:04	24.11.2019
HEPA filter is dirty. Replacement required	Failure	21:04	21.11.2019
Medical accident gases oxygen	Failure	23:24	10.12.2019



Event log

Control commands, equipment conditions and accidents are recorded around the clock in a log that is accessible from the service panel

Showrooms

MOSCOW
pr. Vernandskogo, 96

ST. PETERSBURG
Levashovskiy Avenue, 12

MINSK
Krasnaya Street, 13



FUNDS AND GRANTS

